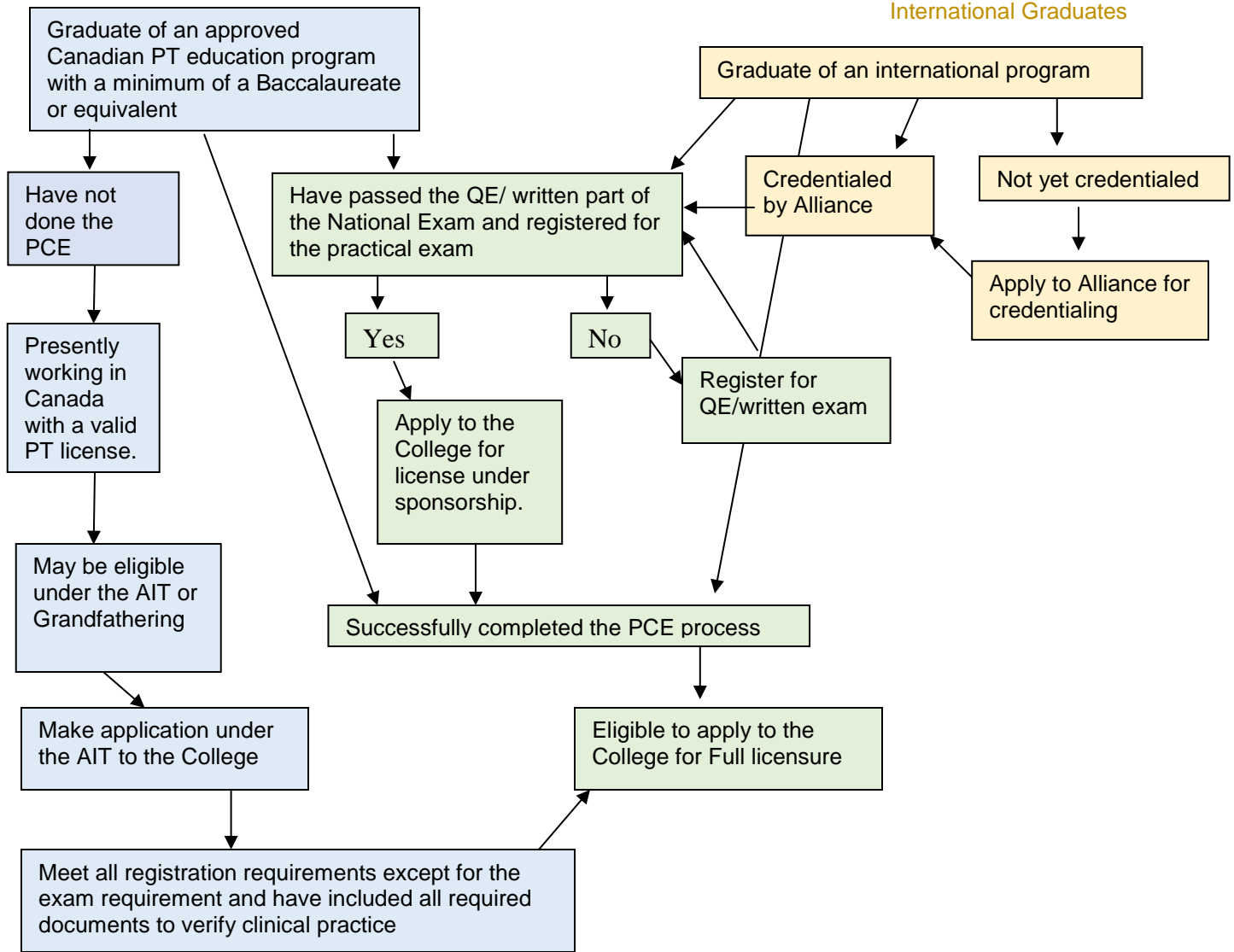


# ENTRY TO PRACTICE in NOVA SCOTIA FLOW CHART

## Canadian Graduates

## International Graduates



This flow chart is provided to show the steps in registration. It must be noted that if you have failed the practical exam twice than you are not eligible for consideration for registration to the College until such time as you have successfully completed the PCE process. For further information contact the College office at:

P.O. Box 22,  
Smiths Cove, NS  
B0S 1S0  
(P) 902-221-7254 (F) 902-245-3134  
Email: [registrar@nsphysio.com](mailto:registrar@nsphysio.com)