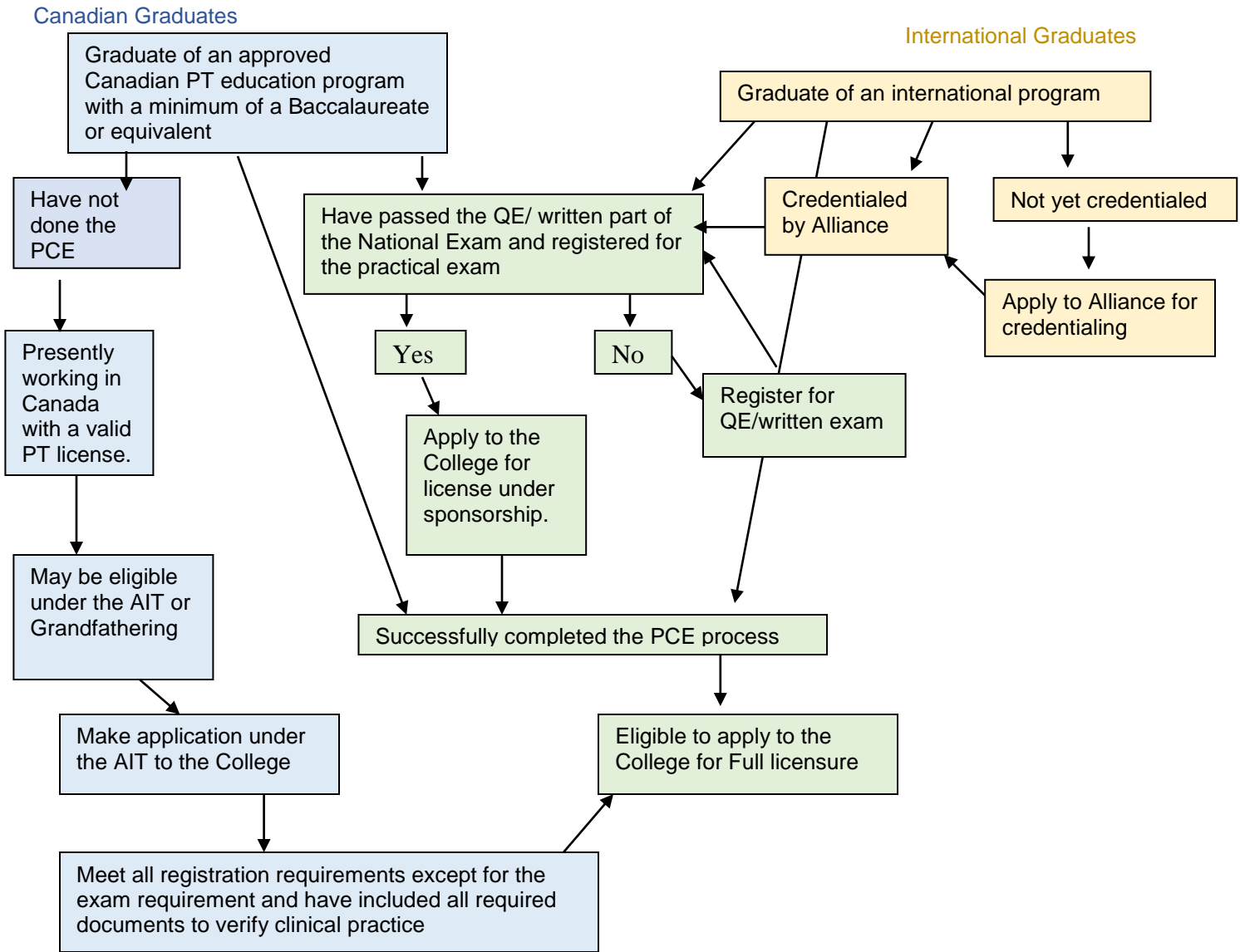


ENTRY TO PRACTICE in NOVA SCOTIA FLOW CHART



This flow chart is provided to show the steps in registration. It must be noted that if you have failed the practical exam twice than you are not eligible for consideration for registration to the College until such time as you have successfully completed the PCE process. For further information contact the College office at:

PO Box 22
25 Sulis Lane
Smith's Cove, NS. B0S 1S0
Ph. 902-454-0158 Fax: 902-484-6381
Toll free: 866-225-1060
Email: registrar@nsphysio.com